

Upgrade Guide DTKC16-EMS

YIC System
CS Team
Rev. 0.0



YIC System Co., Ltd.

Upgrade Guide

Copyright © 2009 YIC System Co., Ltd.

All rights reserved. No part of this publication may be reproduced, stored in a retrieval system, or transmitted in any form or by any means, electric or mechanical, or otherwise, without the prior written consent of YIC System.

TEL: +82-31-278-0461

Home Page: <http://www.yicsystem.com>

Printed in the Republic of Korea

Rev. History

Date	Update	Writer
2009.06.12	Create	R.S.W

1. DTKC16-EMS Upgrade

1.1. Requirement

CalmSHINE16 or CalmSHINE16Plus for Smard Card is installed.

If the program is not installed, install it by referring “Setup Guide” or User’s Manual.

1.2. CalmSHINE16 Update

CalmSHINE16 can be downloaded from the Samsung website.

<http://www.samsung.com/CalmSDK>

or

http://www.samsung.com/global/business/semiconductor/products/microcontrollers/Products_Microcontrollers_SamsungDevelopmentTools_downloads.html

1.3. OPENice-C3200 firmware Update

1.3.1. Requirement

- CalmSHINE16 or CalmSHINE16Plus for Smard Card is installed.
- OPENice-C3200 USB driver is installed.

1.3.2. Update procedure

1. Get the firmware to update, for example you might get it from the website.

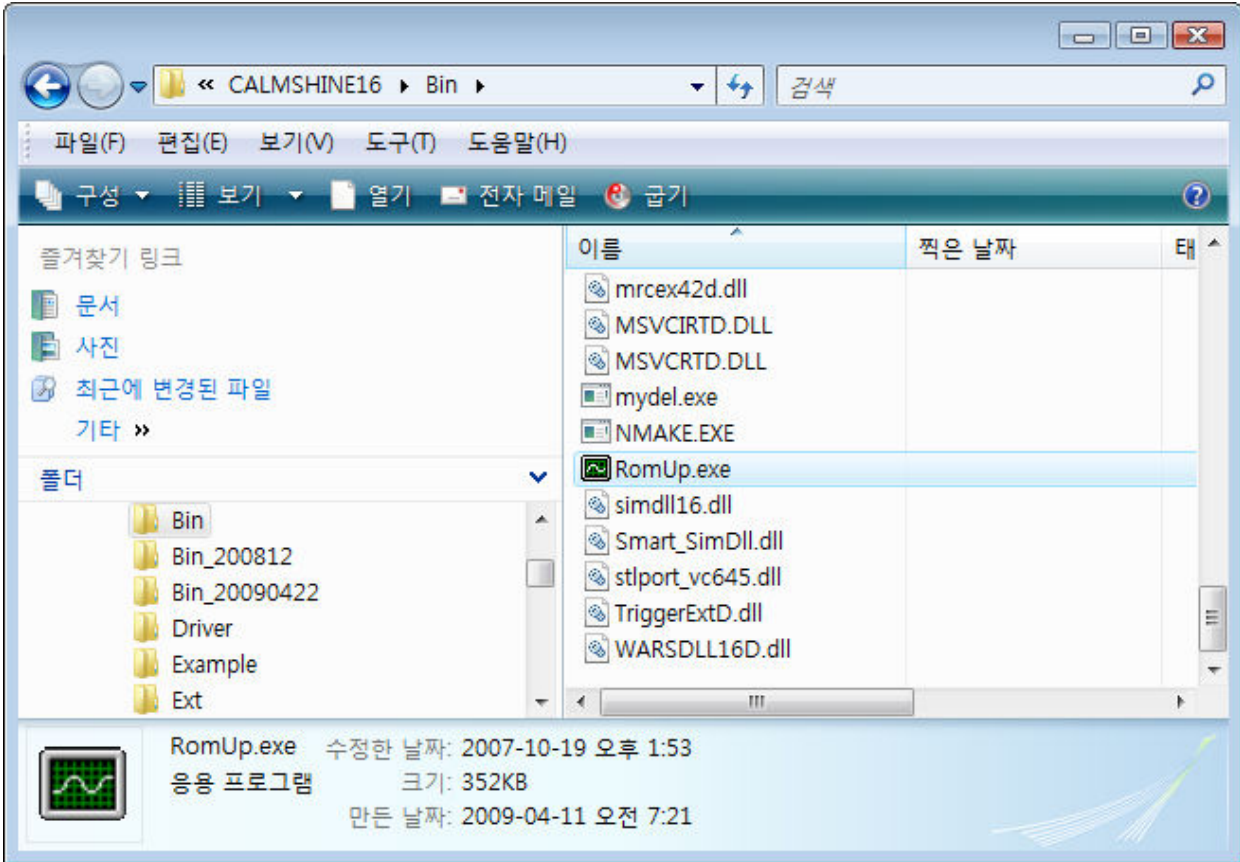
(http://www.yicsystem.com/contents/english/dn_calmdev.htm)

ex: [C3200_1.03d_90n_CalmFlash_20090529.zip](#)

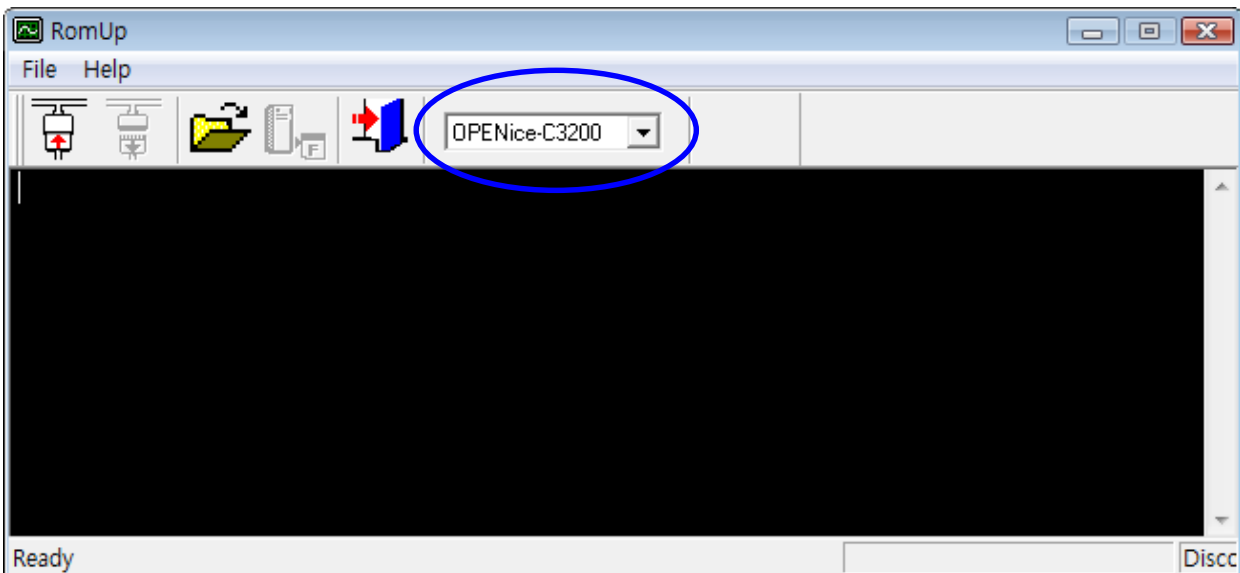
* Caution *

The OPENice-C3200 firmware should be supported by the installed CalmSHINE16.

2. Run Romup.exe (“..\CalmSHINE16\bin\Romup.exe”)

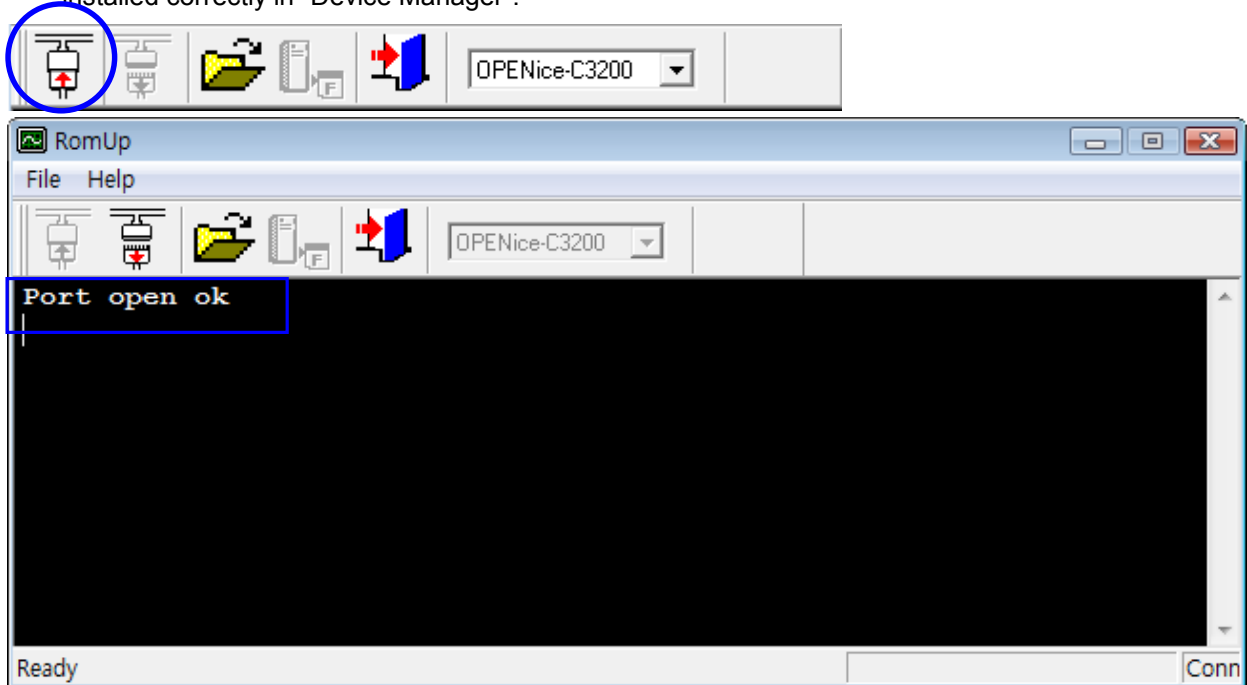


3. Select 'OPENice-C3200' from the emulator list box in Romup toolbar.

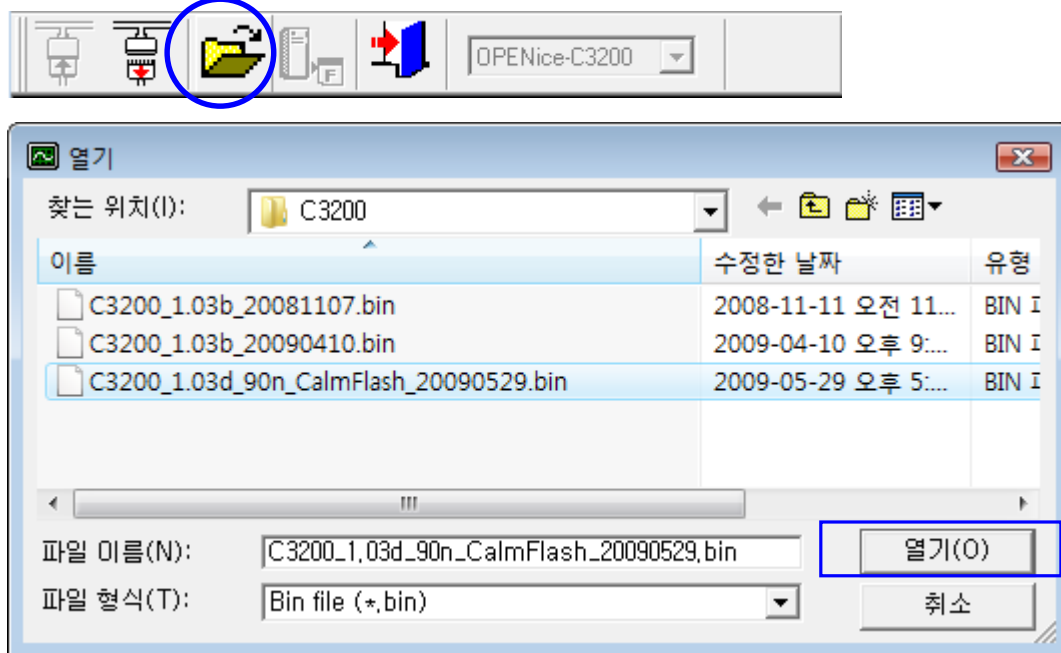


4. Click 'Connect' button. Then, check "Port Open OK" message.

If it is failed, check again after resetting OPENice-C3200 or check if OPENice-C3200 USB driver installed correctly in "Device Manager".



5. Click 'File Open' button and select the firmware to update



6. Click 'Update' button.



7. If "update" is finished, reset or power off&on OPENice-C3200

